

DA 超级拱型护舷

Super Arch Rubber Fenders

传统V型护舷的改良型号，设计压缩量大，吸能更高；
坚固可靠，简单且耐用；

The super arch fender is modified from the traditional V type arch fender .

High energy absorption and low reaction force.

Strong and hard wearing, Excellent shear performance,
Large range of standard sizes.

Can be fitted with either UHMW-PE face pads or

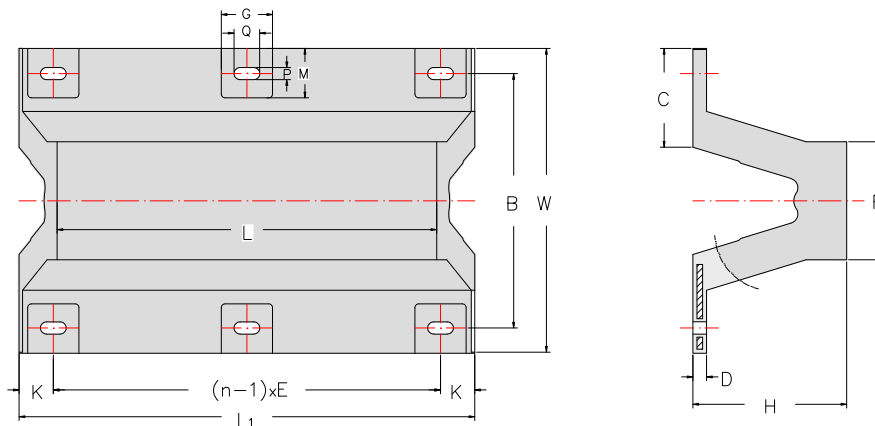


DA 超级拱型护舷

Super Arch Rubber Fenders



护舷尺寸 Dimension



规格 Specification	H	W	B	F	C	D	P	Q	M	G
150H	150	300	240	98	96	22	25	50	55	95
200H	200	400	320	150	128	24	29	58	75	105
250H	250	500	410	187	160	30	32	64	90	125
300H	300	600	490	225	195	33	35	70	105	140
400H	400	800	670	300	260	40	41	82	120	165
500H	500	1000	840	375	325	45	47	94	140	180
600H	600	1200	1010	450	390	54	50	100	160	195
800H	800	1600	1340	600	520	72	68	136	260	270
1000H	1000	1850	1550	650	580	52	54	108	300	290

[Units: mm]

护舷规格 Specification

规格 Specification	150H						200H					
L	1000	1500	2000	2500	3000	3500	1000	1500	2000	2500	3000	3500
L1	1075	1575	2075	2575	3075	3075	1100	1600	2100	2600	3100	3600
n	2	3	4	4	5	6	2	3	4	4	5	6
E	855	675	620	785	715	671	860	680	620	785	715	672
K	110	112.5	107.5	110	107.5	110	120	120	120	122.5	120	120
重量 Weight (kg)	36	57	74	91	109	128	61	92	124	153	181	210

[Units: mm]

护舷规格
Specification

规格 Specification	250H						300H					
L	1000	1500	2000	2500	3000	3500	1000	1500	2000	2500	3000	3500
L1	1125	1625	2125	2625	3125	3625	1150	1650	2150	2650	3150	3650
n	2	3	4	4	5	6	2	3	4	4	5	6
E	865	680	620	790	715	673	870	685	625	790	715	674
K	130	132.5	132.5	127.5	132.5	130	140	140	137.5	140	145	140
重量 Weight (kg)	86	130	171	225	269	310	126	178	234	308	370	432

[Units: mm]

规格 Specification	400H						500H					
L	1000	1500	2000	2500	3000	3500	1000	1500	2000	2500	3000	3500
L1	1200	1700	2200	2700	3200	3700	1250	1750	2250	2750	3250	3750
n	2	3	4	4	5	6	2	3	4	4	5	6
E	900	700	635	800	725	680	930	715	645	810	730	686
K	150	150	147.5	150	150	150	160	160	157.5	160	165	160
重量 Weight (kg)	206	302	390	510	636	738	326	460	601	806	955	1110

[Units: mm]

规格 Specification	600H						800H					
L	1000	1500	2000	2500	3000	3500	1000	1500	2000	2500	3000	3500
L1	1300	1800	2300	2800	3300	3800	1400	1900	2400	2900	3400	3900
n	2	3	4	4	5	6	2	3	4	4	5	5
E	960	730	655	820	740	692	1040	770	680	845	760	885
K	170	170	167.5	170	170	170	180	180	180	182.5	180	180
重量 Weight (kg)	481	680	883	1102	1342	1580	875	1227	1585	2042	2410	2800

[Units: mm]

规格 Specification	1000H											
L	1000	1500	2000	2500	3000							
L1	1500	2000	2500	3000	3500							
n	2	3	4	4	5							
E	1100	800	700	860	775							
K	200	200	200	210	200							
重量 Weight (kg)	1402	1910	2440	2950	3480							

[Units: mm]

护舷性能 Performance

规格 Specification			150H*	200H	250H	300H	400H	500H	600H	800H	1000H
性能 Performance											
RS	52.5%	R(kN)	129	170	270	325	430	540	645	864	1080
		E(kNm)	7	11	28	41	73	113	163	290	450
	55%	R(kN)	174	230	375	450	600	750	895	1200	1490
		E(kNm)	8	14	30	44	78	120	175	310	486
RH	52.5%	R(kN)	112	150	208	248	330	415	495	664	830
		E(kNm)	6	12	22	31	55	87	125	223	349
	55%	R(kN)	151	202	288	345	460	575	690	922	1150
		E(kNm)	7	13	23	33	60	93	135	239	374
RO	52.5%	R(kN)	84	112	172	206	275	344	412	550	688
		E(kNm)	4	10	18	26	46	72	104	185	289
	55%	R(kN)	113	152	239	286	382	478	572	764	956
		E(kNm)	5	11	19	28	49	77	111	198	310
RL	52.5%	R(kN)	56	75	148	175	235	295	354	472	590
		E(kNm)	3	6	16	22	40	62	89	159	248
	55%	R(kN)	76	105	205	245	328	410	492	655	820
		E(kNm)	4	7	17	24	43	66	95	170	265

注 Note:

(1) RS-超高反力型, RH-高反力型, RO-标准反力型, RL-低反力型 ;

(2) R-反力, E-吸能 ; 设计压缩量52.5%, 最大压缩量55% ; 150H的设计压缩量为45% , 虽大压缩量50% ;

(3) 上述数据为每米性能 , 其它长度护舷的力学性能 , 在1000mm长度基础上乘长度的倍数 ;

(4) 性能公差: 反力 \leq +10%, 吸能 \geq -10%

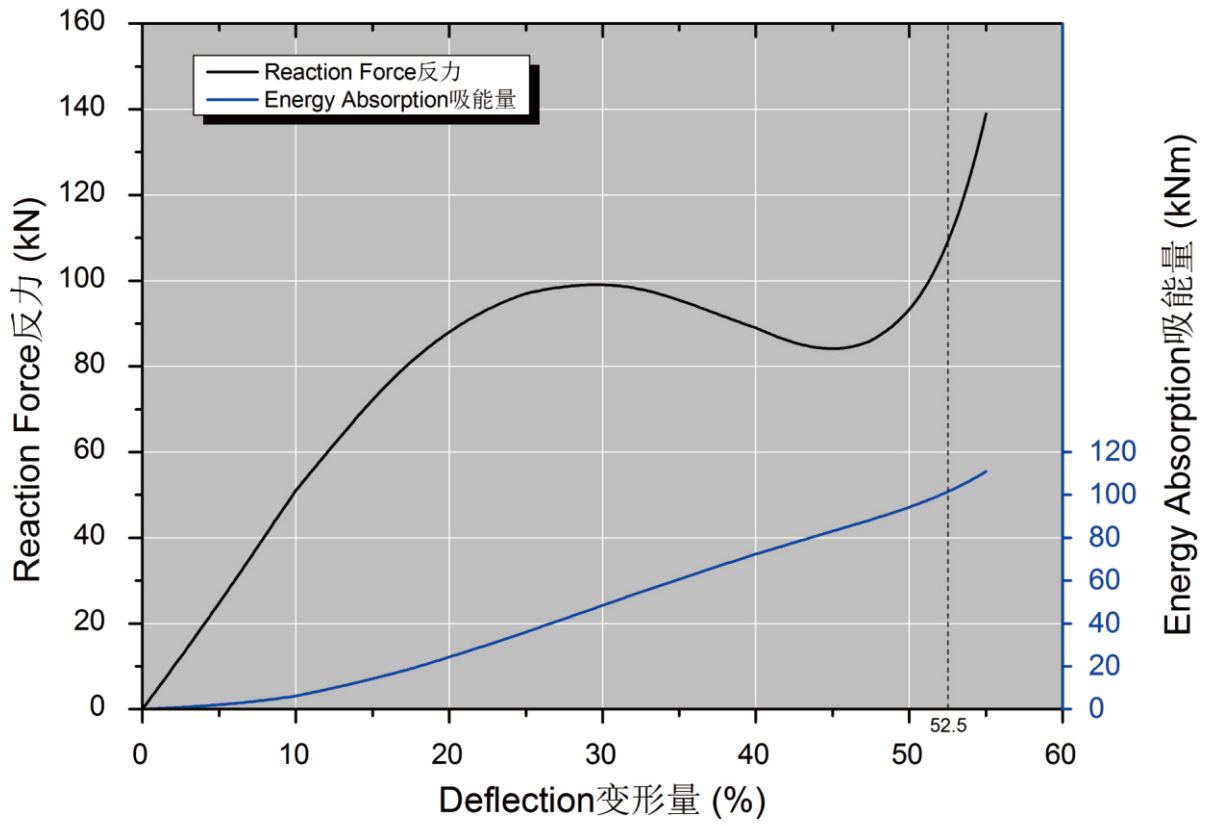
RS: Super high Reaction Force, RH: High Reaction Force
 RO: Standard Reaction Force, RL: Low Reaction Force
 R: Reaction Force, E: Energy Absorption.
 Rated Deflection: 52.5%, Maximum Deflection: 55%. *150H: Rated Deflection: 45%
 Performance tolerance: Reaction Force: \leq +10%, Energy Absorption: \geq -10%

PIANC系数 PIANC factors					
角度系数Angular compression Factor		温度系数 Temperature Factor		速度系数Velocity Factor	
角度 (度) Angle(deg)	AF	温度 (摄氏度) Temperature(°C)	TF	时间 (秒) Time (second)	VF
0	1.000	50	0.882	1	1.014
3	0.963	40	0.926	2	1.005
5	0.952	30	0.969	3	1.004
8	0.939	23	1.000	4	1.003
10	0.924	10	1.056	5	1.003
15	0.817	0	1.099	6	1.002
20	0.535	-10	1.143	8	1.000
		-20	1.186	\geq 10	1.000
		-30	1.230		



性能曲线

Performance Curve



DAF 拱型橡胶护舷

Super Arch Rubber Fenders



护舷特点

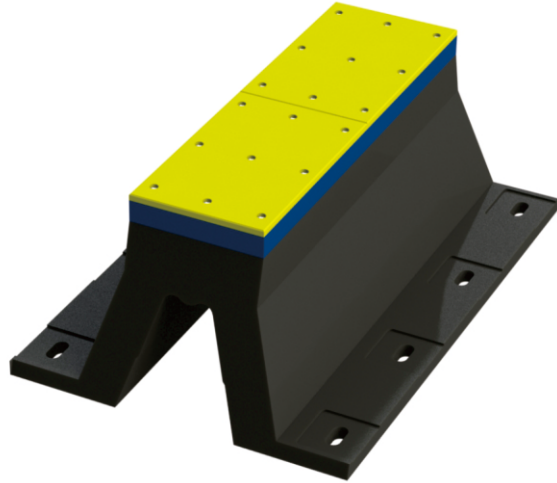
Features

DAF 拱型护舷, 是在拱型护舷顶部安装 PE面板或钢制防冲板。

相比传统拱型护舷更加坚固耐磨, 减少

The DAF fender can be fitted with either UHMW-PE face pads or connected to a steel panel.

Superior abrasion-resistance and strong



护舷性能

Performance

规格 Specification			150H	200H	250H	300H	400H	500H	600H	800H	1000H
性能 Performance											
RS	50%	R(kN)	181	241	257	326	413	511	613	831	1015
		E(kNm)	7	13	24	35	64	102	133	265	417
RH	50%	R(kN)	155	208	196	242	316	401	462	621	788
		E(kNm)	6	11	19	27	49	78	108	200	312
RO	50%	R(kN)	116	157	165	200	261	354	386	510	655
		E(kNm)	5	8	15	21	41	64	83	150	262
RL	50%	R(kN)	78	103	144	158	229	269	299	456	539
		E(kNm)	3	6	12	16	31	54	71	126	221

注 (1) RS-超高反力型, RH-高反力型, RO-标准反力型, RL-低反力型 ;

Note:

(2) R-反力, E-吸能 ; 设计压缩量50%

(3) 上述数据为每米性能, 其它长度护舷的力学性能, 在1000mm长度基础上乘长度的倍数 ;

(4) 性能公差: 反力 \leq +10%, 吸能 \geq -10%

RS: Super high Reaction Force, RH: High Reaction Force

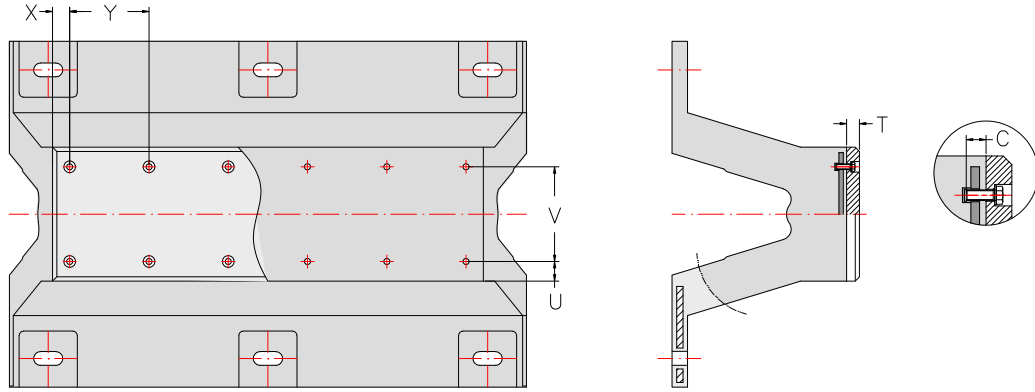
RO: Standard Reaction Force, RL: Low Reaction Force

R: Reaction Force, E: Energy Absorption.

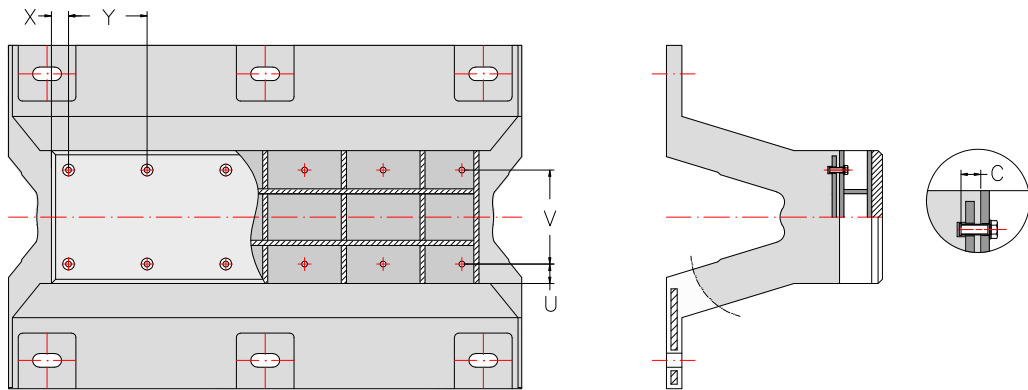
Rated Deflection: 50%

Performance tolerance: Reaction Force: \leq +10%, Energy Absorption: \geq -10%

护舷尺寸 Dimension



安装有PE面板
Fixing with PE Pad



安装有钢制防冲板
Fixing with Frontal Panel

规格 Specification	U	V	C	PE贴面板 Face Pad				防冲板 Steel Frame		
				X	Y	T	六角螺栓 Bolt Size	X	Y	六角螺栓 Bolt Size
150H	49	0	20~30	60~70	300~410	30	M16	70~150	250~300	M16
200H	65	0	30~45	60~70	300~410	30	M16	70~150	250~300	M16
250H	50	64	30~45	60~85	300~410	30	M16	70~150	250~300	M20
300H	60	105	30~45	65~85	300~410	40	M16	70~150	250~300	M24
400H	60	180	30~50	65~85	300~410	40	M16	70~150	250~300	M27
500H	65	245	30~50	65~85	300~410	50	M20	70~150	250~300	M30
600H	70	310	35~60	65~85	300~410	50	M20	70~150	250~300	M30
800H	80	440	50~70	65~85	300~410	60	M24	70~150	250~300	M36
1000H	90	570	50~70	65~85	300~410	60	M24	70~150	250~300	M36

[Units: mm]

以上表格数据仅供参考,如有疑问,请进行咨询。

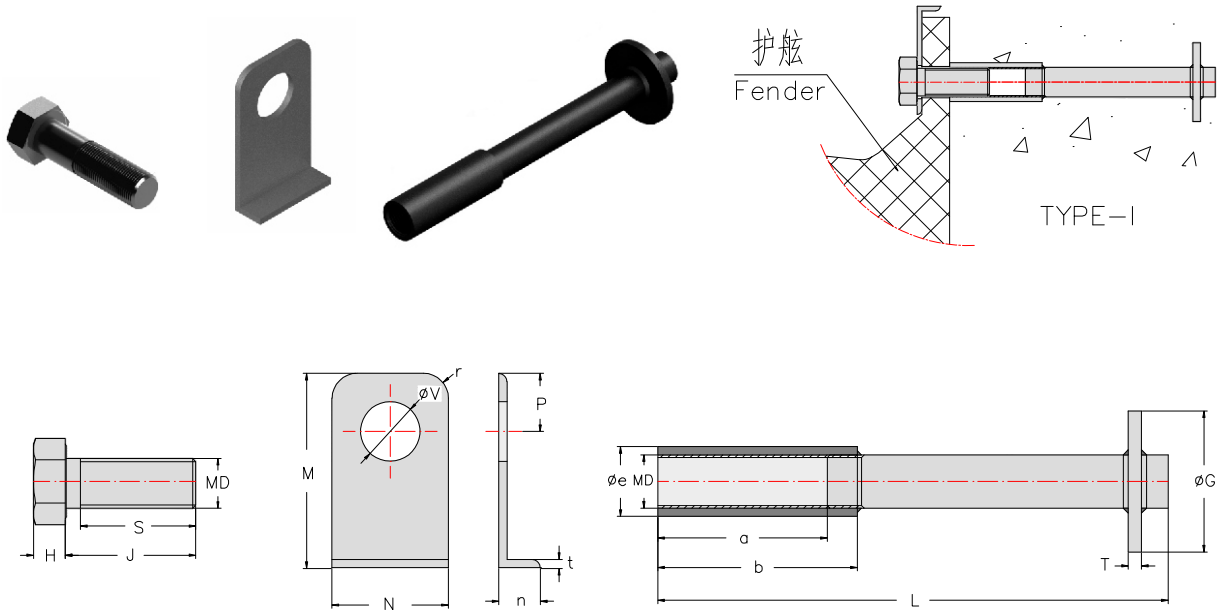
Data given in the above diagram are for guidance. If in doubt, please contact us.

预埋件

Precast Nut

适用于新浇筑混凝土

Used for installing fenders to new concrete.

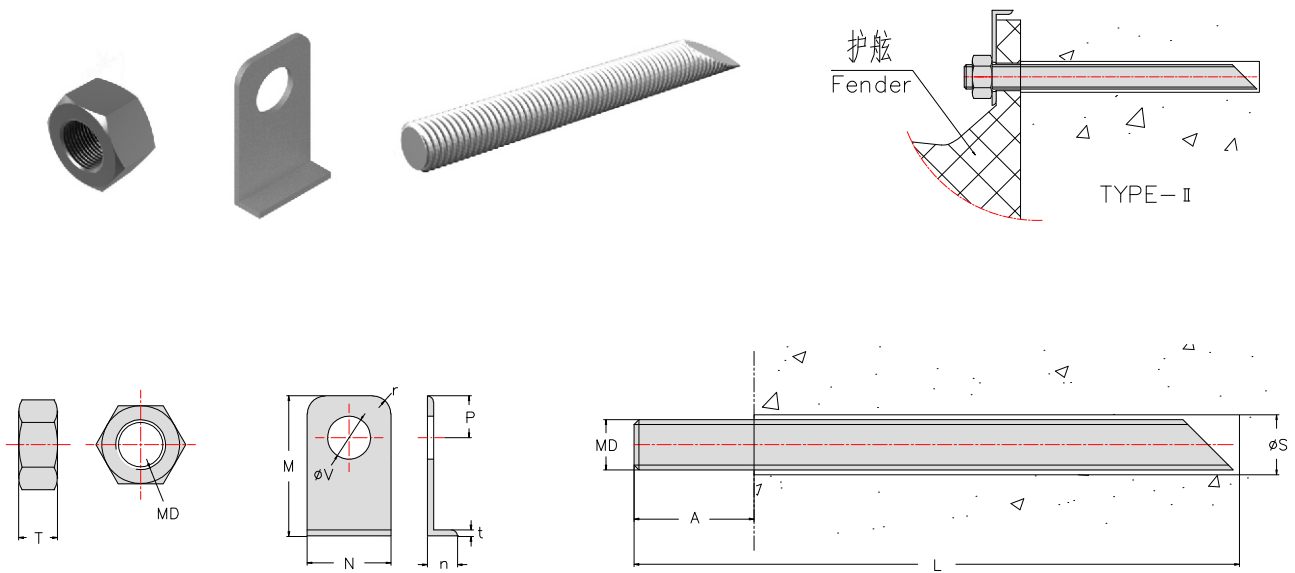


规格 Specification	螺栓 Hex Bolt				垫片 L-Washer							预埋螺母 Precast Nut			地角杆, 地角板 Anchor Rod, plate		
	MD	H	J	S	N	n	M	P	t	V	r	a	b	e	T	L	G
150H	M22	14	55	50	68	12	60	23	5	24	10	50	75	31	6	165	50
200H	M24	15	65	55	74	14	80	33	5	26	10	59	85	34	6	180	55
250H	M27	17	65	60	88	16	95	42	5	30	15	60	90	37	9	200	55
300H	M30	19	85	70	100	19	110	47	5	37	15	85	120	42	9	300	80
400H	M36	23	95	80	119	22	126	52	6	43	25	85	125	48	9	360	85
500H	M42	26	110	90	127	25	145	56	6	49	30	95	140	58	12	420	110
600H	M48	30	110	100	139	28	165	61	6	52	30	95	145	65	12	480	115
800H	M64	40	150	120	195	32	266	124	8	70	40	125	190	78	16	640	130
1000H	M64	40	150	120	215	36	306	134	8	70	40	125	190	78	16	640	130

[Units: mm]

预埋件-II

Anchor Bolt-II



规格 Specification	锚固螺栓 Anchor Bolt				螺母 Nut	垫片 L-Washer						
	MD	A	L	ΦS		T	N	n	M	P	t	V
150H	M22	50	260	28	18	68	12	60	23	5	24	10
200H	M24	55	280	30	20	74	14	80	33	5	26	10
250H	M27	60	320	32	22	88	16	95	42	5	30	15
300H	M30	65	360	38	24	100	19	110	47	5	37	15
400H	M36	80	440	46	29	119	22	126	52	6	43	25
500H	M42	90	510	55	32	127	25	145	56	6	49	30
600H	M48	100	580	60	36	139	28	165	61	6	52	30
800H	M64	125	780	75	49	195	32	266	124	8	70	40
1000H	M64	140	780	75	49	215	36	306	134	8	70	40

[Units: mm]